

3 Free users for life

SPINSO



Lite edition

ComplaintTracker

Manage customer complaints





Installation Guide

Step by step guide for download and installation

Index

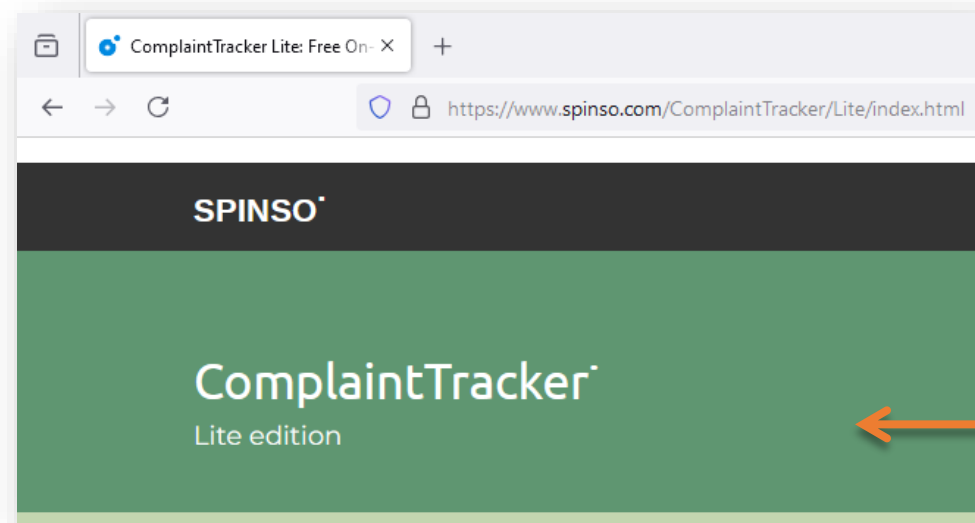
Installation Guide

1. Index	pg 3
2. Download	pg 5
3. Install	pg 7

Prerequisite

- Operating system Windows Xp, Windows 7, 8, 8.1, 10 or 11
- Microsoft Dot Net Framework 2.0 (Free Runtime)

Step 1. Download



1

In the web browser, go to our website

<https://www.spinso.com/ComplaintTracker/Lite/index.html>

In ComplaintTracker Lite Edition home page, scroll down to see the download button.
Click on “**Download now**”

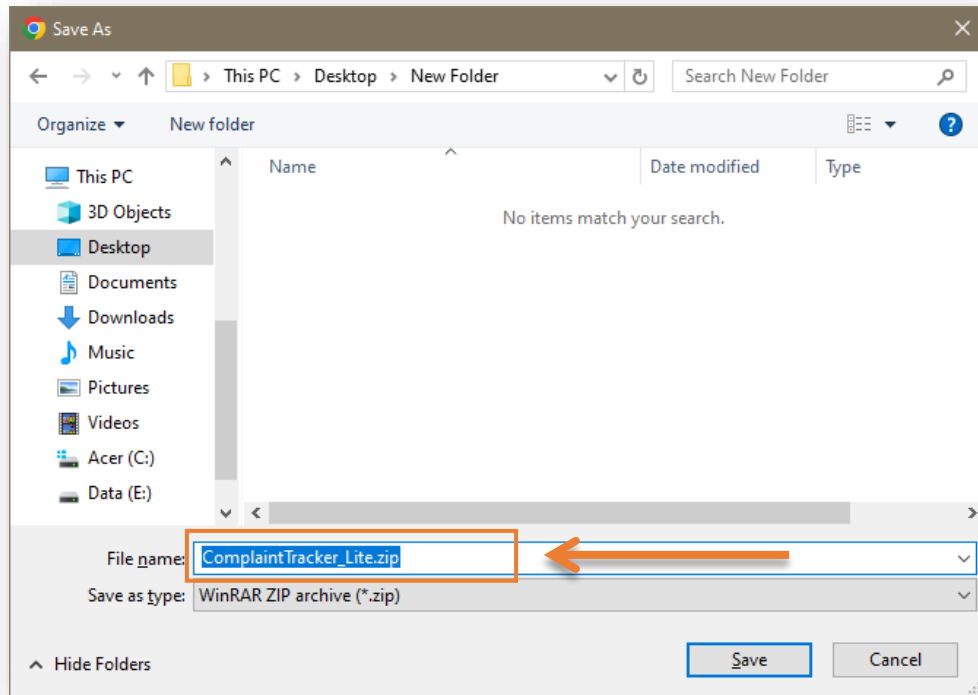
2

It is a standalone windows application that works without internet.

Download Now
free edition

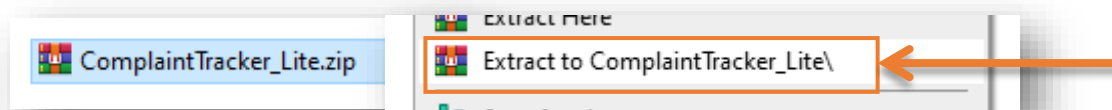
Help
Installation & getting started
coming soon

features & benefits



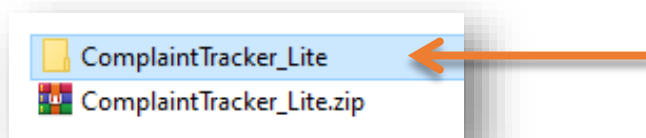
3

Create a New Folder in your PC then **save** the zip file.



4

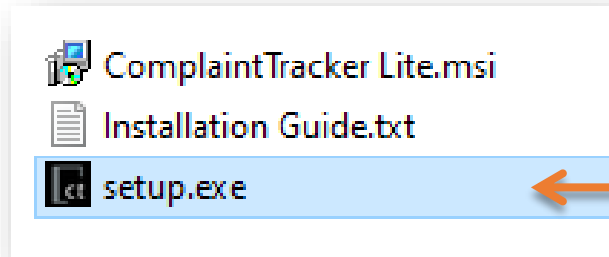
Right Click on the Zip file then **Extract**.



5

Open the extracted folder **ComplaintTracker_Lite**
You will see three files

Step 2. Install



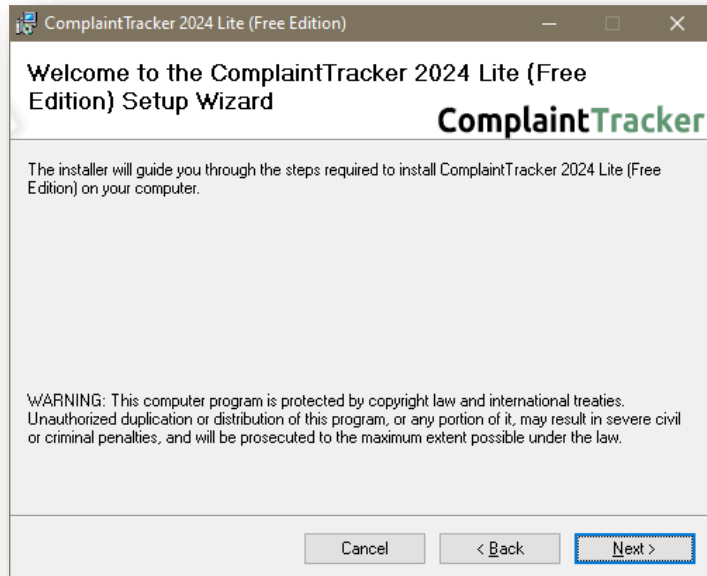
1

Click on the **setup.exe**



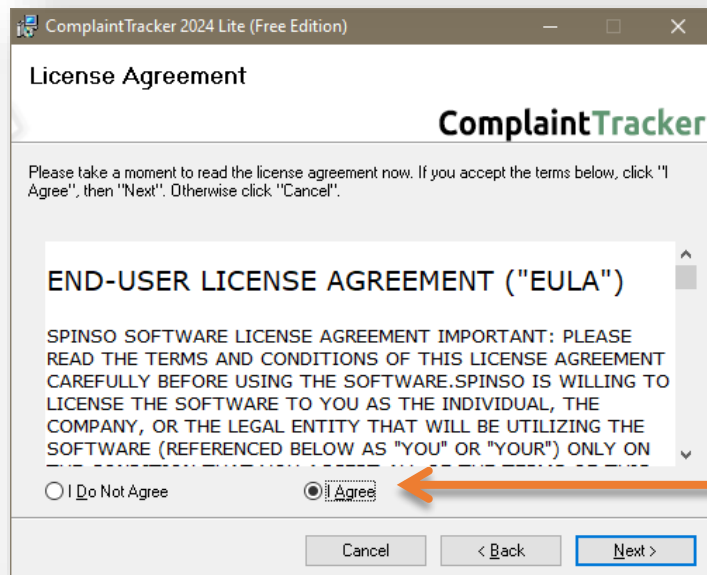
2

Click on **Next**



3

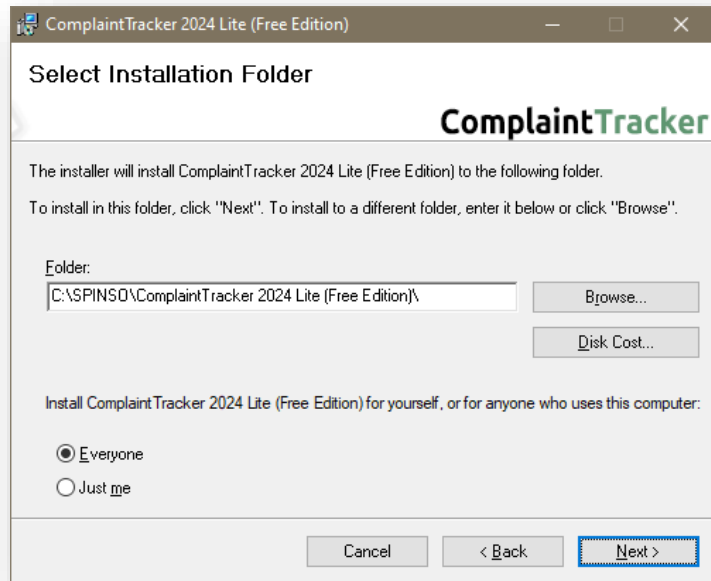
Click on **Next**



4

Select **I Agree**

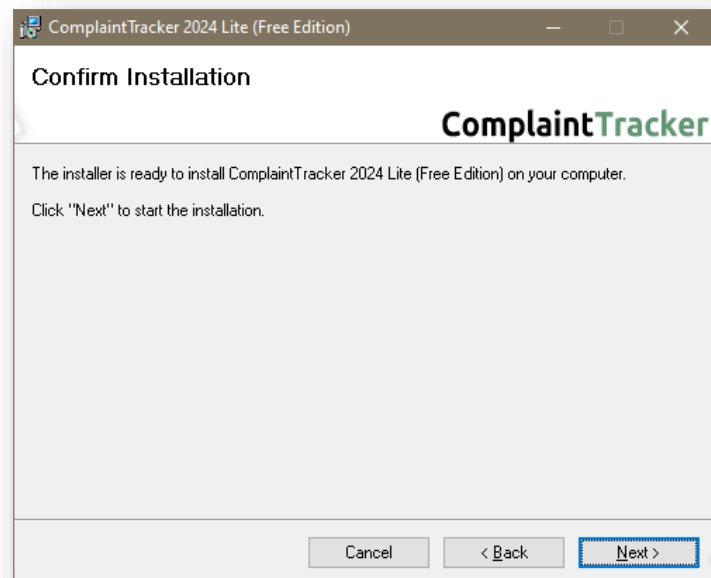
Click on **Next**



5

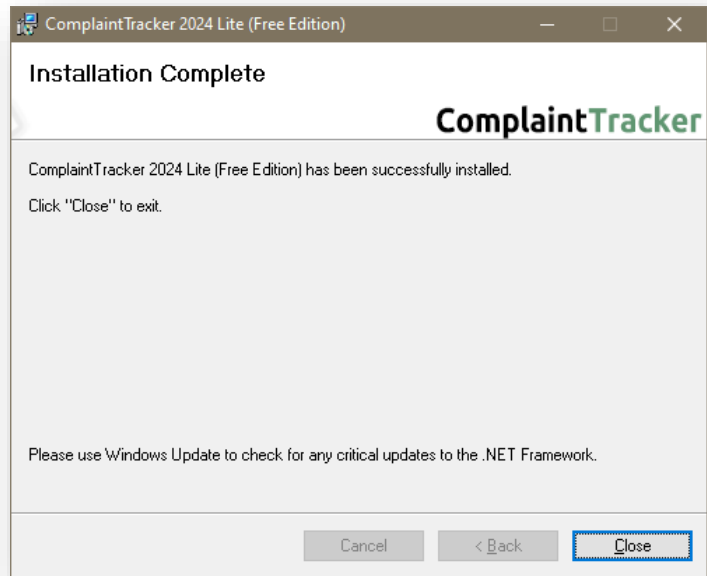
- If you wish to change the installation path, Click on “**Browse**” and select the path.
- We would recommend default path.
- Click on **Next**.

Please Note: ComplaintTracker lite (free edition) should be installed in C Drive only.



6

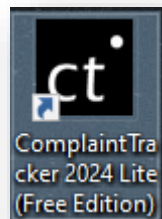
Click on **Next**



7

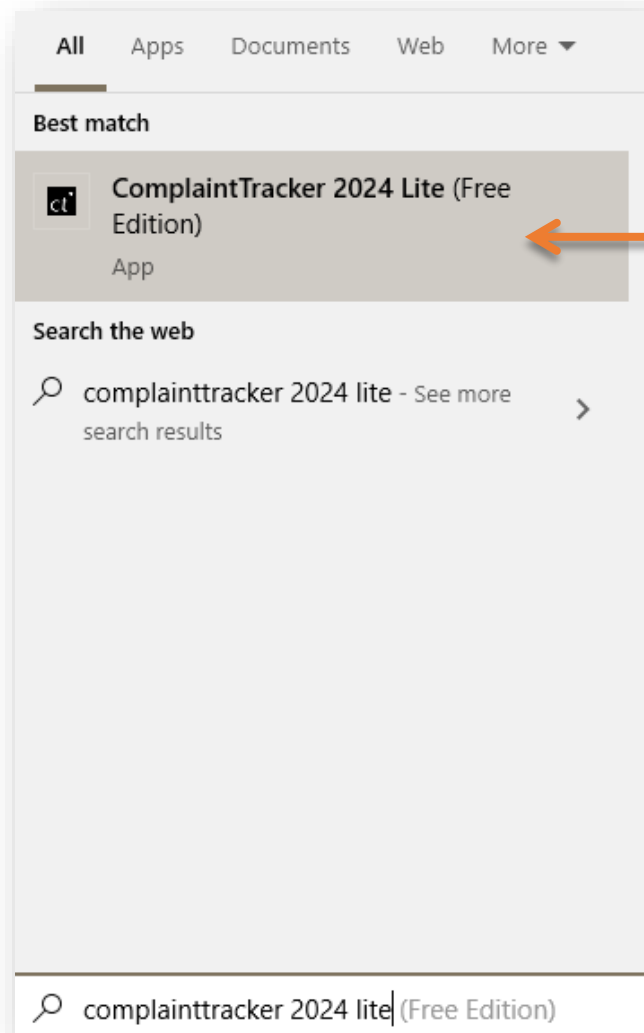
Click on **Close**

Installation is complete

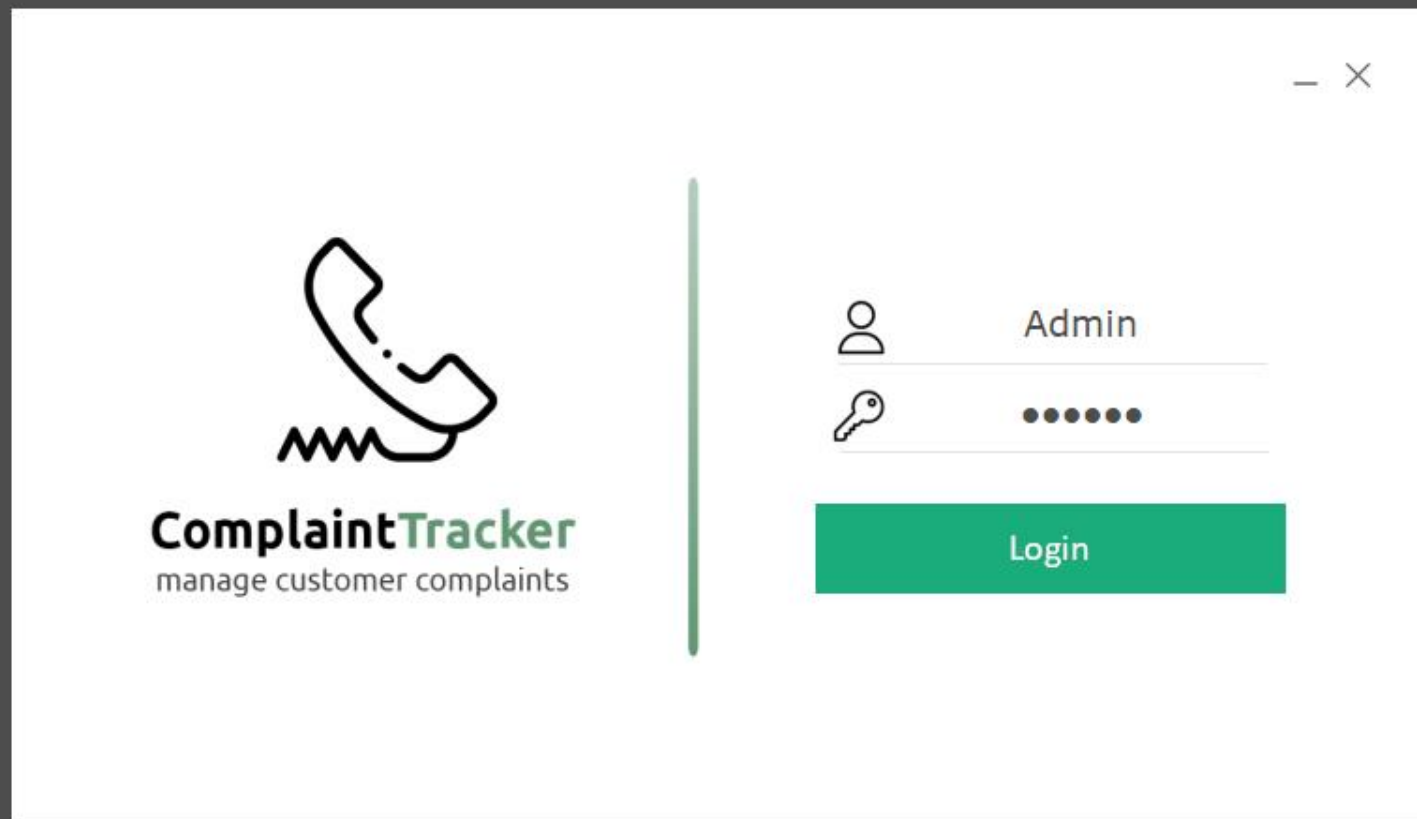


- You will see **ComplaintTracker** icon in your desktop.
- Double click on the icon to launch the application.

or



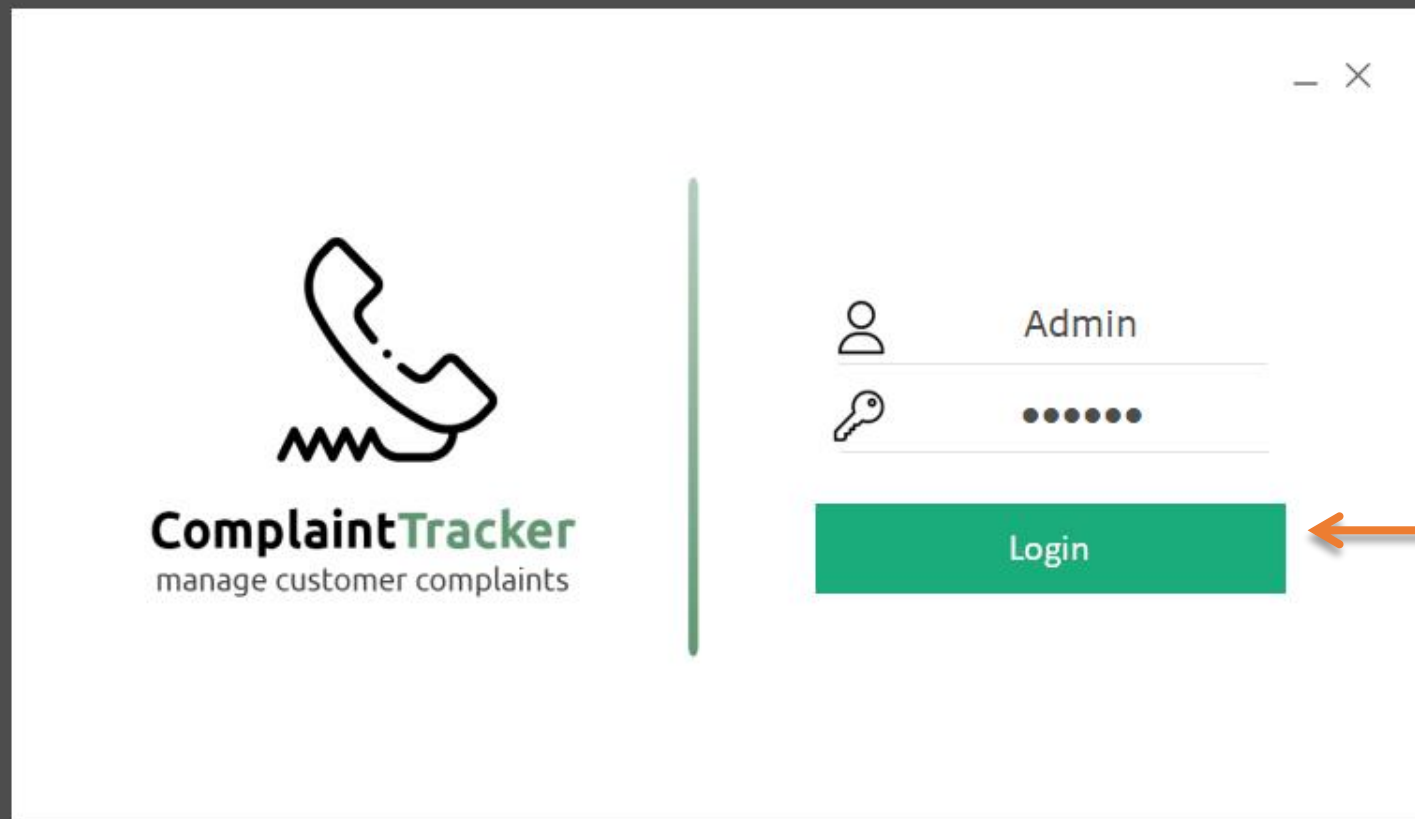
You can also launch the application from
Start - Program Files - Spinso - ComplaintTracker



Here, you can see the edition and version of our software. Please check and confirm.

Lite 2024 R 1.0
Free Edition (3 Users Free Forever)

OS
SMI
PS



Click on
Login

Default login details:

- User Name : **admin**
- Password : **spinso**

Thank you

We hope the installation was successful. Kindly contact SPINSO for any queries, we are happy to help.

We recommend you to see our **Getting Started** Help file for ComplaintTracker lite,
before you start using our software.